

RME NEWS 2024

MILAN / DANTE & MADI SOLUTIONS



M-1620 Pro Series // **HDSPe** AoX Series // **MADiface XT II**

Professional multi-channel audio solutions with maximum flexibility, latest AD/DA converters, optimised analog circuitry, as well as improved SNR and THD values guarantee pristine, crystal clear and transparent audio for any application - studio, live, broadcast and installations.

RME

HDSPe AoX

512-Channel PCI Express Card with MADi, DANTE® or MILAN®

M-1620 Pro Series

16 Channel A/D, 20 Channel D/A Converter
with ADAT, MADi, DANTE® or MILAN®



Simplicity at first glance - Flexibility and reliability beyond

The RME M-1620 Pro converts 16 analog line-level signals (per channel switchable up to +24 dBu) to and from MADi, ADAT, Dante or AVB/Milan network technology. This innovative unit is designed with a newly developed front panel that combines LED level meters with a display and includes two separate headphone outputs for monitoring - all within a single-height 19-inch rack device. Cutting-edge converters and flexible internal routing place it at the forefront of any audio network.

RME prioritizes reliability by equipping the M-1620 Pro with built-in redundancy. This includes dual network and dual MADi connections, along with a monitored DC input in addition to the internal AC power supply. A unique system clearly signals when an issue arises, ensuring seamless operation. With full stand-alone capability, users can adjust device settings directly on the unit for quick modifications or to recall entire user-defined presets.

RME network devices can also be fully remote controlled via a web-interface on any network link (including wirelessly over Wi-Fi), allowing for the rapid creation of gain groups, phantom power switching, and routing of signals to headphones for monitoring.

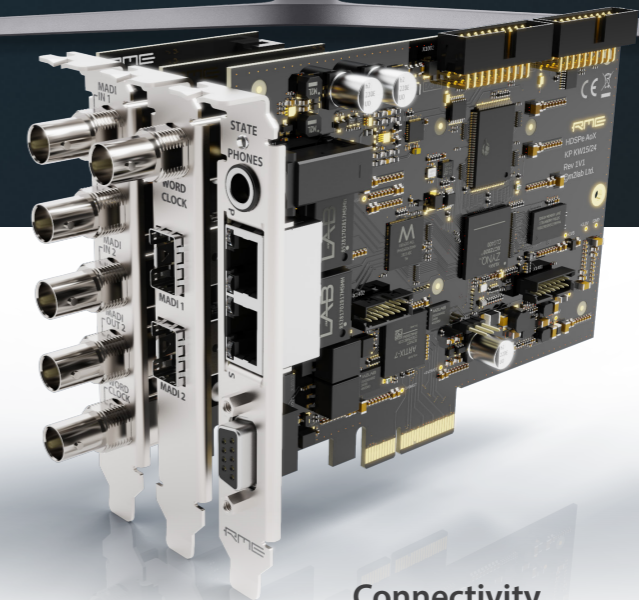
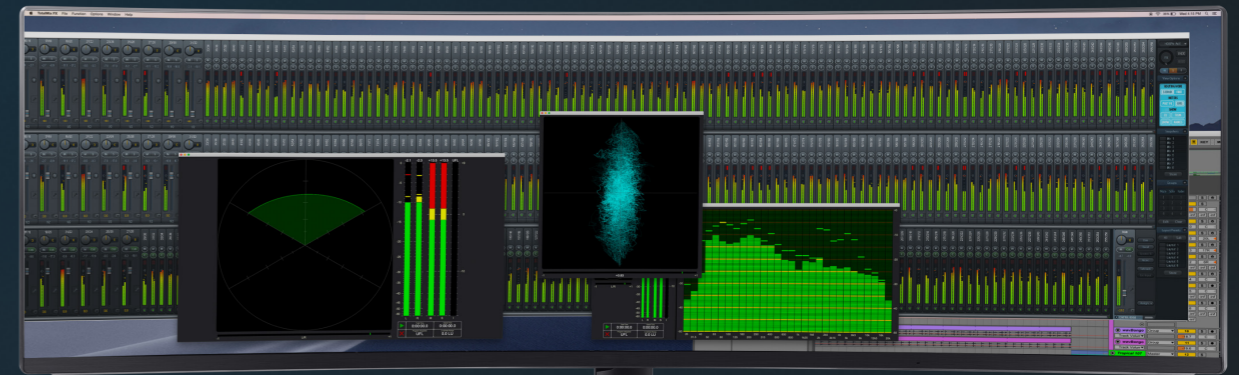
Connectivity

- 16 x Analog In (25-pin D-sub, up to +24 dBu, fully symmetrical design)
- 16 x Analog Out (25-pin D-sub, up to +24 dBu, fully symmetrical design)
- 2x Stereo Phones // 4x ADAT I/O
- 2 x MADi I/O (separate optical SFP Modul and coaxial BNC, up to 128 Ch.)
- 2 x RJ45 1 Gige AVB, four streams with 4/8/12/16 Ch. each
- Word Clock I/O (BNC) // USB 2.0 (for remote control and firmware updates)

Highlighted Features

- 16/20 Analog I/O
- SteadyClock FS
- Redundant power supply
- Intuitive user interface
- MADi I/O

Choose your specific combination of MADi, AVB/Milan or Dante connectivity



Channels Galore

The HDSPe AoX PCIe x4 audio interface cards combine dual network ports with headphone output, AES3, MIDI, and internal expansion headers for up to four MADi ports. Whether used in a Thunderbolt™ expansion chassis or built into DAWs or audio processors, these cards send and receive up to 512 channels of audio and provide numerous mixing and routing capabilities via TotalMix.

Connectivity

- 1x Phones // 2x Gigabit Ethernet (802.3 compliant)
- 1x AES/EBU I/O

Highlighted Features

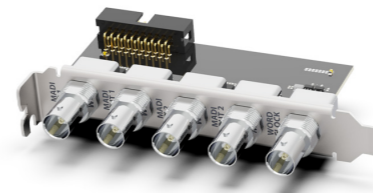
- 256/256 TotalMix I/O
- TotalMix FX
- Optional MADi I/O

Optional

Advanced Remote Control



AoX-MADI-EXT-BNC



AoX-MADI-EXT-SFP



HDSPe AoX Expansion Board Coaxial Version: 4x BNC connectors or Optical Version: 2x MADi SFP module slots and Word Clock BNC connector (SFP Multi Mode modules included, SFP Single Mode module optional) with MADi I/O: 128/64/32 channels at 48/96/192 kHz sampling rate.

ROOM EQ



Equipped with ROOM EQ for Stereo, Surround or Immersive Audio formats

MADiface XT II

394-Channel Triple MADI USB 3.0 Audio Interface



MADI to DAW

RME presents the MADiface XT II a 394-channel 192 kHz USB 3.0 audio interface with comprehensive connectivity and control options for live and studio work. Compared to its predecessor MADiface XT, the MADiface XT II features updated digital and analog circuitry and surpasses the first generation with significantly improved analog and digital performance.

The MADiface XT was the world's first USB 3.0 audio interface at the time of its release - and impressed with its combination of an extremely high channel count, comprehensive connectivity and a compact desktop housing. With two practical mic/line preamps (XLR/TRS combo inputs), two balanced XLR line outputs, a stereo line headphone output, a variety of digital signal options (MADI coaxial and optical, MIDI/AES, word clock), as well as an additional PCI Express connection, the MADiface XT left nothing to be desired in terms of connectivity.

On the new digital board, the previous analog mini-DIN socket for remote control of individual functions has been replaced by an ARC USB remote port, which enables comprehensive control of the MADiface XT II with the optional ARC USB. The MADiface XT II also offers the Room EQ known from the Fireface UFX III with nine parametric bands for use in surround setups for up to 20 mono output channels.

The successor MADiface XT II maintains this successful formula and surpasses the signal values of its predecessor in numerous areas. Among other things, the MADiface XT II convinces with a higher signal-to-noise ratio and a lower THD value during AD conversion.

Furthermore, the maximum balanced line output level of the XLR line outputs has been increased from +15 dBu to +24 dBu. The stereo headphone output of the MADiface XT II also delivers a significantly higher output level of +19 dBu and, with an output impedance of 1 Ohm, significantly more power than its predecessor. All outputs also have several switchable level options.

Connectivity

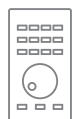
- 2 x MADI I/O optical // 1 x MADI I/O coaxial // 1 x Phones
- 2 x Mic/Line Preamp (XLR/TRS Combo) // 2 x Analog Output (XLR)
- 1 x AES/EBU I/O // 1 x Word Clock I/O // 1 x MIDI I/O via breakout cable
- 3 x MIDI I/O over MADI

Highlighted Features

- 196/198 I/O
- TotalMix FX
- RME USB 3
- SteadyClock FS
- MADI I/O

Optional

- Advanced Remote Control USB
- 19" Rackmount Kit (RM19-II)



More Information: